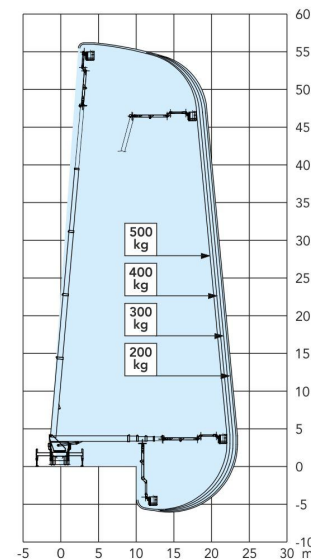
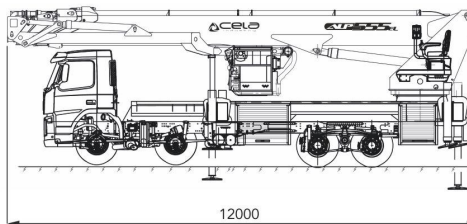
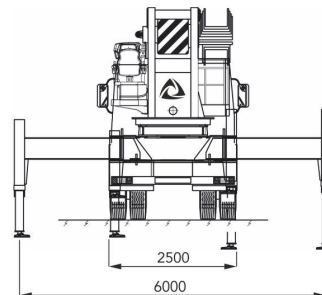


# ALP555<sup>EL</sup>



Data are indicative and subject to change without prior notice

MAX. WORKING HEIGHT	mt	55,00
MAX. WORKING OUTREACH (WITH 120 KG)	mt	23,00
MAX. DOWNREACH	mt	6,00
MAX. UP-AND-OVER CAPACITY	mt	10,00
SAFE WORKING LOAD	kg	500
RESCUE CAGE SIZE	mm	2000x1000x1100
FOLDABLE FRONT PLATFORM	mm	1360x520
TRANSPORTATION LENGTH *	mm approx.	12000
TRANSPORTATION WIDTH *	mm approx.	2500
TRANSPORTATION HEIGHT *	mm approx.	3950
MINIMUM GW	kg	32000
WATER CAPACITY	l/min	3800
MAX OPERATING WIND SPEED	m/s	14

\* depending on chassis

